



Artist's Brief

Royal Hobart Hospital Emergency Department – Paediatrics – 2D artwork

| | |
|--------------------------|--|
| Commission | Two-dimensional artwork |
| Eligibility | Artists who meet: <ul style="list-style-type: none">• Arts Tasmania's general eligibility guidelines and• the Tasmanian Government's eligibility policy for Aboriginal and Torres Strait Islander programs. |
| Selection process | The selection committee considers all eligible applications against the selection criteria. The committee then: <ul style="list-style-type: none">• selects an artist for the commission, or• shortlists artists to develop their ideas further (each artist will receive a fee of \$500) |
| Location | Royal Hobart Hospital, C-Block Liverpool Street, Hobart |
| Audience | General public, patients, staff, visitors, families |
| Fee | \$17,000 + GST (if applicable) for artwork concept, detailed design and delivery of digital files |
| Key dates | Applications close: 6 July 2026 Digital files of artwork by: end of February 2027 |
| Contact | Mish Meijers, Public Art Officer 03 6165 6672 mish.meijers@arts.tas.gov.au |
| Apply | www.arts.tas.gov.au/public_art |

The commission

Arts Tasmania and the Department of Health invite applications from Tasmanian Aboriginal artists to create three, two-dimensional (2D) artworks for the waiting area of the Paediatrics' Emergency Department. The artworks will be delivered as digital files to the project's specifications.

Background

The Royal Hobart Hospital completed the first stage of its expansion in 2023. The upgraded modern facilities now include a \$10 million 28-bed short stay unit and total of 82 treatment points. The second phase of improvements for the Emergency Department will increase capacity to meet the ever-growing demand for emergency care. Construction is expected to begin in early 2026 and is expected to take approximately two years.

The Emergency Department expansion will provide:

- 120 treatment points, including procedure rooms
- CT and X-Ray bays and two ultrasound rooms
- separation of adult and paediatric treatment spaces with dedicated waiting areas for children
- appropriate separation of ambulance and ambulatory presentations
- a discrete mental health safe assessment unit and support areas
- added consult and interview spaces to meet demand.

For more information about Stage 2 Royal Hobart Hospital Master plan please visit links provided below:

<https://www.health.tas.gov.au/publications/royal-hobart-hospital-masterplan-2020-2050>

<https://www.health.tas.gov.au/about/doing-business-us/priority-projects/royal-hobart-hospital-emergency-department-expansion-artists-impressions>

Objectives

Royal Hobart Hospital (RHH) in Hobart, Tasmania, is committed to providing a culturally safe environment for all patients, including those from Aboriginal and Torres Strait Islander communities. Key purposes of the artwork are to assist in creating a welcoming and safe space for Aboriginal communities within the hospital environment that improves the look and feel of a hospital waiting room area.

The artworks will serve as cultural touchstones, welcoming patients into a space that respects and celebrates First Nations heritage. By embedding stories and symbols of Country into the physical environment, the project not only acknowledges the deep cultural significance of the land but also creates a meaningful and inclusive atmosphere for all patients visiting the hospital.

The artwork will feature in an area where families may arrive to the Paediatric Emergency Department feeling stressed, anxious or overwhelmed. The designs should be inviting and engaging, giving children and their family, guardians, or friends a comforting focus while waiting in the key areas.

The artwork should:

- be welcoming and appeal to a wide audience especially children
- brighten and improve the waiting room area
- be three engaging and distinct artworks that complement one another
- improve the experience for patients, family members and staff
- consider connections to place and culture within Tasmania
- fit the orientation of the walls as listed and shown on the elevation below.

The three artworks are required as digital files (to specifications to be provided). The project team will then arrange for the artworks to be printed on vinyl and installed on three main walls in the Paediatric waiting room in the new Emergency Department.

The artist may be required to consult with the project team during the preparation and installation of vinyl artwork.

The project team will be responsible for all costs of fabrication, printing and installation of the vinyl artworks (not the artist).

Dimensions listed below are to assist artists with artwork layout considerations including if an artwork would need to be in portrait or more landscape layouts.

| | |
|--|--|
| Waiting room (A) has four walls with the back wall split into two large and two joining walls that surround the main seating area Please note the A1 elevation shows round shapes – which are nooks that children could sit and play within | Approximate widths of walls A1 90 cm + A2 7.3 m + A3 1.4 – Height 1.7 m Height of A1 is 2.7m |
| Corridor (B) | H 2.7 m x 4.8 m |
| Corridor (C) | H 1.3 m x 2.4 m |

Specific requirements

High quality digital files will be required in a specified size and format ready for production – specifications will be provided.

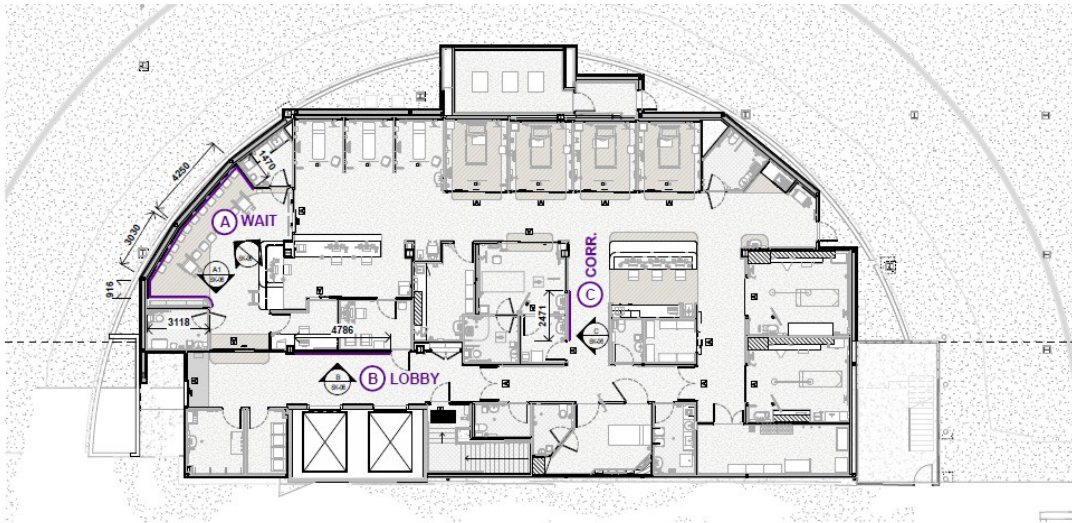
The artwork budget will need to cover the cost of making the artwork digitally ready for the printers, which may include the artist to engage a graphic designer.

Artwork layout should consider the wall orientation and any physical elements that may obscure areas of artwork (such as wall nooks as set out in the elevation A1) to ensure the key elements of the artwork remain viewable.

Please see a render of the waiting room below with a placeholder image of the night sky. The selected artist artwork will replace this imagery.



Elevation A1, A2, A3 show the main waiting area that has a bank of seating. The artwork for this area would need to work across the four panels of walls and consider the cubby nooks as seen on A1.



See the three areas purple hatched areas where artworks will be installed as vinyl.

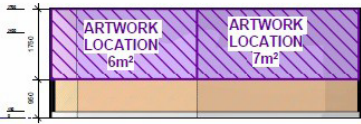
1. Main waiting - see A1, A2 and A3
2. Corridor B - see elevation B
3. Corridor C - see elevation C

Artwork layout should consider the various orientations

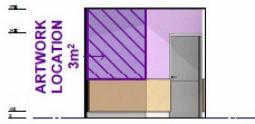
1 Arts Tas Location Plan - GF Paeds
SCALE: 1:50
KEY: PROPOSED LOCATION OF ARTS TAS WORKS



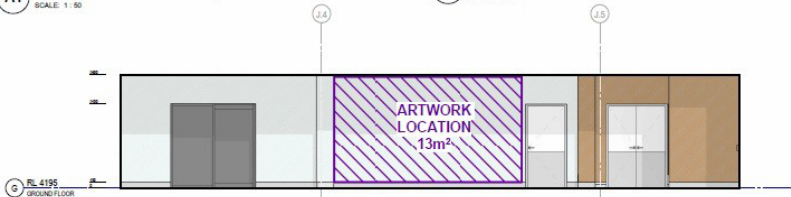
A1 PAEDS WAIT - Elevation A1
SCALE: 1:50



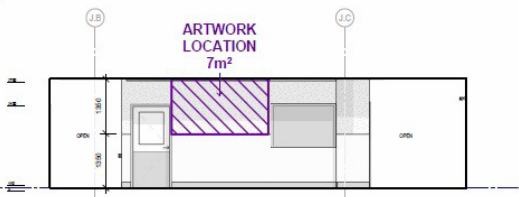
A2 PAEDS WAIT - Elevation A2
SCALE: 1:50



A3 PAEDS WAIT - Elevation A3
SCALE: 1:50



B PAEDS CORR. - Elevation B
SCALE: 1:50



C PAEDS CORR. - Elevation C
SCALE: 1:50

I A W S ARCHITECTS
LAUNCESTON

DO NOT SCALE DRAWINGS. WRITTEN DIMENSIONS GOVERN. ALL DIMENSIONS ARE IN MILLIMETRES UNLESS NOTED OTHERWISE. ALL DIMENSION LINES ARE REFERRED TO AS DISCREPANCIES. THIS DRAWING MUST BE READ IN CONJUNCTION WITH ALL RELEVANT CONTRACTS, SPECIFICATIONS, REPORTS AND DRAWINGS.

| PROJECT | DRAWING | DRAWING NAME |
|----------------------------|----------------------|---------------------------------------|
| RHH ED REDEVELOPMENT | STATUS PRELIMINARY | Arts Tas - Location Plan |
| 48 LIVERPOOL STREET HOBART | REV DESCRIPTION DATE | Scale As indicated @ A1 Date 24.11.25 |
| | | Project No. Sheet No. Revision |

Apply

You will need to upload your support material and fill out the Smarty Grants form found here via [our website](#)

You can provide up to;

- Five examples that demonstrate your design idea or images that indicate the style and approach
- and up to 10 examples of your arts practice
- a combined CV or biography for all artists involved (no more than two pages total).

Selection committee

The selection committee is comprised of building users, capital project managers and representatives of partner agencies, as follows:

- Annika Scott, Young Palawa community representative

- Kevin Stokes, Architect, JAWS Architects
- Kerry Deverell, Co-chair of waranta tunapri, Aboriginal Health Program Officer, Primary Health Tasmania
- Amy Glynn, Clinical Nurse Consultant, Royal Hobart Hospital, Department of Health
- Michael Pears, Capital Project Manager, Department of Health
- Mish Meijers, Public Art Officer, Arts Tasmania, Department of State Growth
- Nieka Gillies, Senior Social Worker - Aboriginal Health, Tasmanian Health Service

Selection process

The selection committee will choose an artist to work on the commission using four criteria, as follows:

| | |
|--------------------|---|
| Suitability | To what extent do the artistic concept, design, materials and delivery method address the brief? |
| Viability | How feasible is the project given the commission budget, constraints and timelines? |
| Capability | To what extent does the team demonstrate the necessary skills and experience to deliver the commission? |
| Vision | How well does the proposal demonstrate a creative or innovative vision in terms of concept, media, construction methods, materials and/or collaborations? |

Please note that members of the selection committee may sometimes nominate a colleague to participate in the selection process on their behalf.

Commissioning process

Commission agreement

If you are selected to work on the commission, you will be asked to:

- meet with us to discuss arrangements for the commission, such as payment instalments, roles and responsibilities, insurance
- sign a commissioning agreement to confirm this information in writing

Detailed design development

Once you have signed the commission agreement you will be asked to:

- produce a detailed design plan to realise your concept, including artwork specifications such as drawings
- make sure your design meets all relevant requirements for digital file
- report regularly to the project team as the commission progresses

- manage all aspects of design through to handover of digital files
- Once your detailed design has been approved by the project team you will be asked to:
- deliver the artwork as digital files ready to produce.

Fabrication and/or installation

- Once the digital files are accepted and fit for purpose the commission is complete.
- The project team will fabricate and install the vinyl artwork. The artist may need to be contacted during this period.

Handover your artwork

Let us know as soon as possible when you are ready to complete your artwork so we can:

- make sure it meets the approved detailed design plan
- provide you with a handover certificate
- document it for our records
- promote it.

General information

The Tasmanian Government Art Site Scheme

This commission is supported through the Tasmanian Government Art Site Scheme. For information about the scheme please visit [the Arts Tasmania website](#).

Aboriginal and Torres Strait Island content

If your activity involves Aboriginal or Torres Strait Islander content, your application must provide evidence of how you are working with the Aboriginal community. The Tasmanian Government's Office of Aboriginal Affairs can provide advice on working with Aboriginal people and organisations. Please also refer to Creative Australia's [Protocols for using First Nations Cultural and Intellectual Property in the Arts](#).

Code of practice

Arts Tasmania encourages artists and arts organisations to comply with the National Association for the Visual Arts' [Code of Practice for Visual Arts, Craft and Design](#).

Workplace health and safety

Siting artworks in the public domain can result in safety risks for the public and for artists. The Department of State Growth requires that commissioned artists comply with [Tasmania's Work Health and Safety laws](#) and the [State Growth Work Health and Safety Contractor Standards](#).

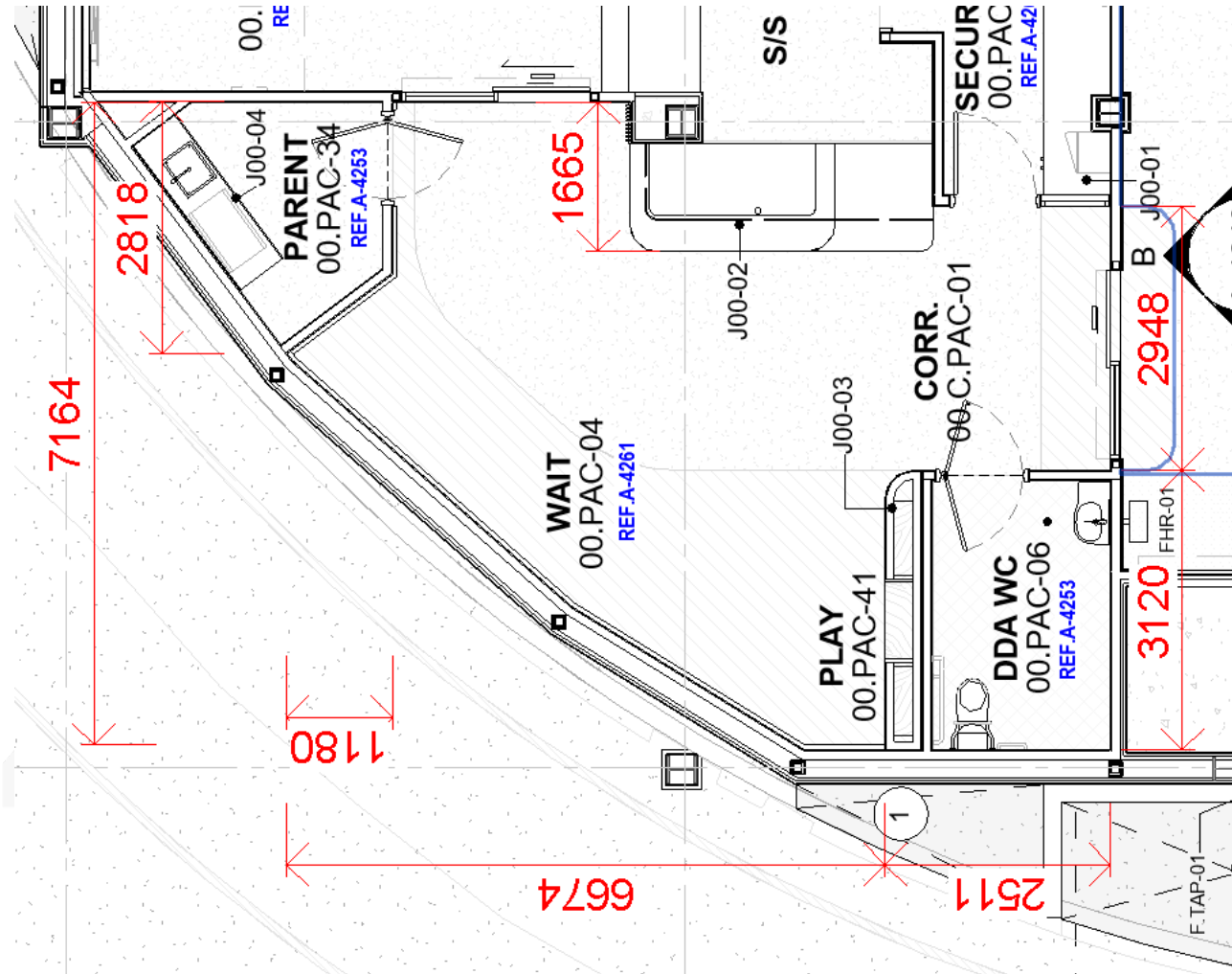
If selected for the commission, you will need to have public liability insurance cover of at least \$10 million.

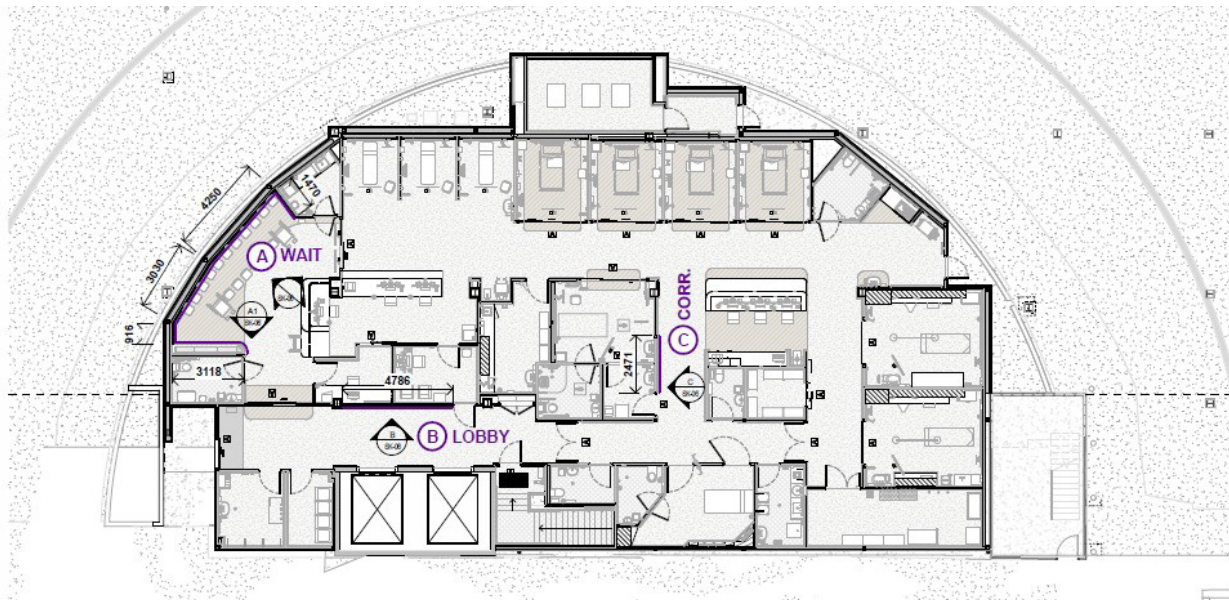
Working with vulnerable people

The [Registration to Work with Vulnerable People Act 2013](#) aims to protect vulnerable persons, including children and young people, from the risk of harm. It requires those working with children and young people to have a current registration and [Working with Vulnerable People \(WWVP\) card](#).

Please visit our website to see Arts Tasmania's [policy on working with children and young people](#).

General - Paediatric Emergency Department plan and elevation of area





1 Arts Tas Location Plan - GF Paeds
 SCALE: 1:100
 KEY: PROPOSED LOCATION OF ARTS TAS WORKS

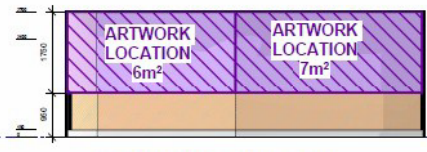
See the three areas purple hatched areas where artworks will be installed as vinyl.

1. Main waiting - see A1, A2 and A3
2. Corridor B - see elevation B
3. Corridor C - see elevation C

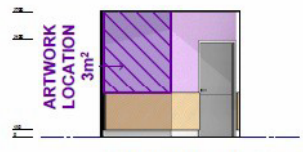
Artwork layout should consider the various orientations



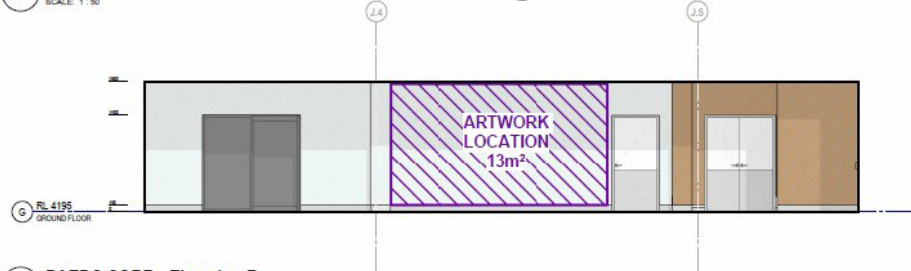
A1 PAEDS WAIT - Elevation A1
 SCALE: 1:50



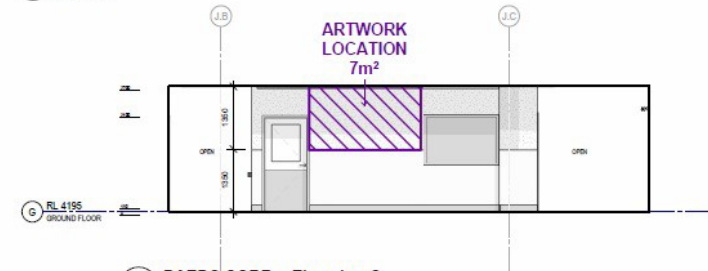
A2 PAEDS WAIT - Elevation A2
 SCALE: 1:50



A3 PAEDS WAIT - Elevation A3
 SCALE: 1:50



B PAEDS CORR.- Elevation B
 SCALE: 1:50



C PAEDS CORR. - Elevation C
 SCALE: 1:50