

# Artist's Brief

## TasTAFE Burnie Campus

### Residential Student Accommodation

Commission & budget	Part	Artworks	Budget (plus GST if applicable)
	Part A – Common Room	Two-dimensional artworks	\$24,000
	Part B – Courtyard	Sculptural elements attached to fence	\$26,000
	Part C – Corridor 3:	Artworks on panels	\$20,000

#### Eligibility

Aboriginal artists who meet:

- Arts Tasmania's [general eligibility guidelines](#) and
- the Tasmanian Government's [eligibility policy for Aboriginal and Torres Strait Islander programs](#).

#### Selection process

Expression of interest with up to six shortlisted Aboriginal artists invited to provide artwork proposals for one or all of the commission parts. Each artist will each receive a fee of \$500 to develop their proposals.

The selection committee will consider these proposals against the selection criteria and select an Aboriginal artist or artists to provide artworks.

#### Location

Student Accommodation, TasTAFE Burnie Campus, Mooreville Road, Shorewell Park

#### Audience

Students, staff and visitors

#### Key dates

Applications close: Monday 20 October 2025

Artwork installed by: April 2026, to be negotiated when construction works completed and site released to TasTAFE

#### Contact

Catherine Wolfhagen, Public Art

Officer

Ph 03 6777 2791 or [catherine.wolfhagen@arts.tas.gov.au](mailto:catherine.wolfhagen@arts.tas.gov.au)

# The commission

Arts Tasmania and TasTAFE invite submissions from Aboriginal artists to create artworks for three locations in the redeveloped student accommodation at TasTAFE's Burnie campus.

## Background

TasTAFE Burnie offers a range of courses across various industries including agriculture, construction, engineering, health and community services. Many students reside more than 50 kilometres from the Burnie campus and require accommodation options.

Work has commenced on the construction of new, modern student accommodation on the Burnie campus on the site of the former student accommodation and classrooms at E Block. The enhanced, modern and purpose-built living facilities will provide students across Tasmania access to vocational training.

The accommodation is unit-style with ensuite bathroom facilities with students sharing a common room, kitchen facilities and dining areas and an outdoor garden.

For more information, visit the [TasTAFE Burnie campus website](#).

## Objectives

The redevelopment is strongly focused on enhancing the overall on-campus experience for TasTAFE students. The artworks selected for this commission will support this objective by welcoming students to the campus.

TasTAFE is seeking to acknowledge First Nations custodianship and provide a welcoming environment for all students by commissioning Aboriginal artists to create place-specific artworks.

This project recognises that only Aboriginal people possess the lived experience, cultural knowledge, and ancestral ties necessary to interpret and represent Country from a First Nations perspective. Their understanding of cultural protocols, stories, and responsibilities around place and Country is essential to ensuring the integrity and authenticity of this work.

In addition to enhancing educational experience, the redevelopment of student accommodation at the Burnie campus aims to foster a sense of belonging and community among students, particularly those relocating from regional and remote areas. By providing modern, comfortable, and purpose-built living spaces, TasTAFE is supporting students in their transition to campus life, helping reduce barriers to accessing vocational education and training. The new facilities are designed to promote social connection, wellbeing, and academic success through shared spaces that encourage interaction and collaboration.

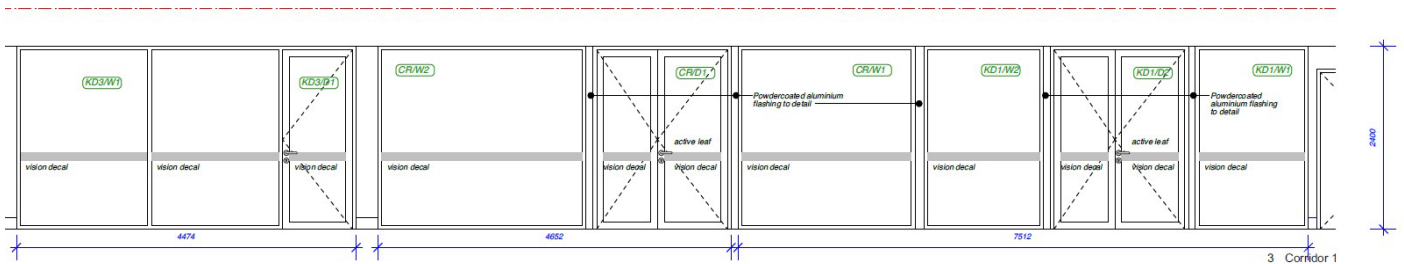
The inclusion of place-specific artworks by Aboriginal artists within the accommodation precinct further strengthens this objective. These artworks will serve as cultural touchstones, welcoming students into a space that respects and celebrates First Nations heritage. By embedding stories and symbols of Country into the physical environment, the project not only acknowledges the deep cultural significance of the land but also creates a meaningful and inclusive atmosphere for all students living and learning at Burnie.

## Commission details

There are three parts to the project and artists can put forward proposals for one, two or all three. Each location has its own artwork budget. This amount must cover all fees and costs associated with completing the commission – from concept development for new works through to fabrication and installation.

### Part A – Common Room ‘community’

Artworks for Part A are to be printed onto vinyl applied to the glass areas along Corridor 1. This area has a sequence of glass panels and doors on both sides of the corridor. The external side of the corridor looks out to the courtyard garden. The other side of the corridor are glass panels and doors that open into the common room and dining areas.



*Elevation view of glass panels and doors of the Common room in Corridor 1 including dimensions in blue*

TasTAFE is seeking artworks that reference the concept of ‘community’. The artwork or series of artworks may be themed around:

- feeling a sense of connection in a community, which values diversity
- ensuring all people feel respected, supported and included, regardless of a person’s background or differences
- providing and receiving support from other people including emotional support, assistance during times of need, and the sharing of resources.

Considerations:

- The artwork for the glass areas along Corridor 1 areas should be printed onto vinyl and incorporate varying levels of transparency.
- The design at the top should be clear to allow light and then graduating down to semi-transparent and then opaque at the bottom to provide privacy for people using the rooms.
- Designs printed on vinyl are required for the glass surfaces to create privacy for those using the rooms without reducing the amount of natural light.

Examples of artwork design printed on vinyl for glass:



TasTAFE Clarence



TasTAFE Agricultural Centre,  
Burnie by Edge Atelier



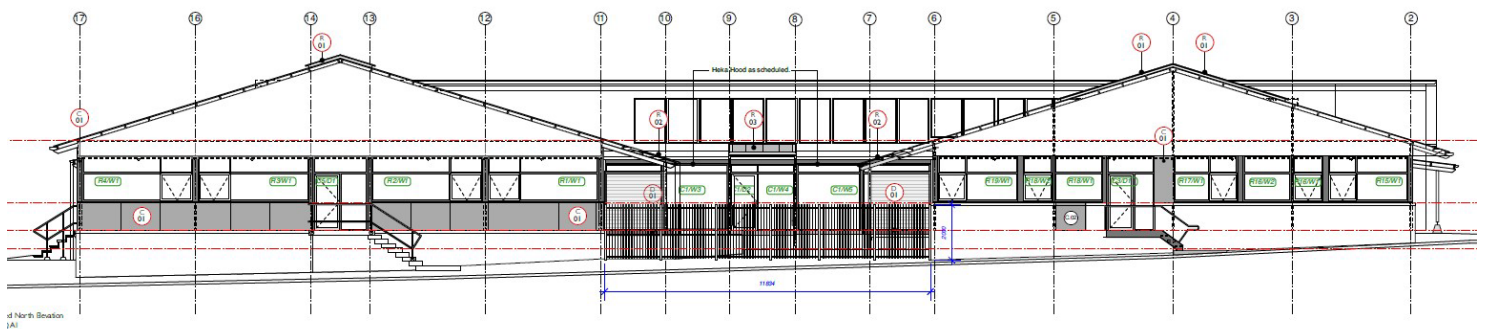
Queenstown Ambulance  
Station by Helen Latham

There are six glass panels including one single glass door and two double glass doors:

Artwork areas	Dimensions
Two glass panels and single glass door	2400 x 4652mm
Three glass panels and one double glass door	2400 x 4474mm
One glass panel + one double glass door	2400 x 7512mm
<b>Total overall dimensions</b>	<b>2400 x 11795mm</b>

## Part B: Courtyard – ‘connection to place’

External artwork elements attached to the existing courtyard fence. Elements should be able to be seen from both sides of the fence.



*External elevation view of existing fence with dimensions in blue*

Artwork elements should reference or acknowledge connection to specific community, place or country where the campus is located. For this commission this may include Burnie, Shorewell, or North West Tasmania.

The artworks may acknowledge:

- country (land, waterways, mountains, etc.)
- the traditional clans who lived around the area, or
- other references that are Aboriginal and unique to this country, community or location.



*Existing fence with gate leading into courtyard garden*

Considerations:

- The location is the courtyard fence and main entrance to the courtyard garden area of the site.
- Artworks must be made from robust materials that are suitable for outside.
- The artwork elements must be attached securely to an existing fence.
- Elements must be able to be seen from both sides.

Fence dimensions: 2000mm high x 11834mm wide.

## **Part C – Corridor 3 ‘community’**

Artwork on panels to be hung on a solid wall located in Corridor 3. This area is accessed by an external door to the right of the courtyard garden.

The artworks should reference the concept of ‘community’. The artwork or series of artworks may be themed around:

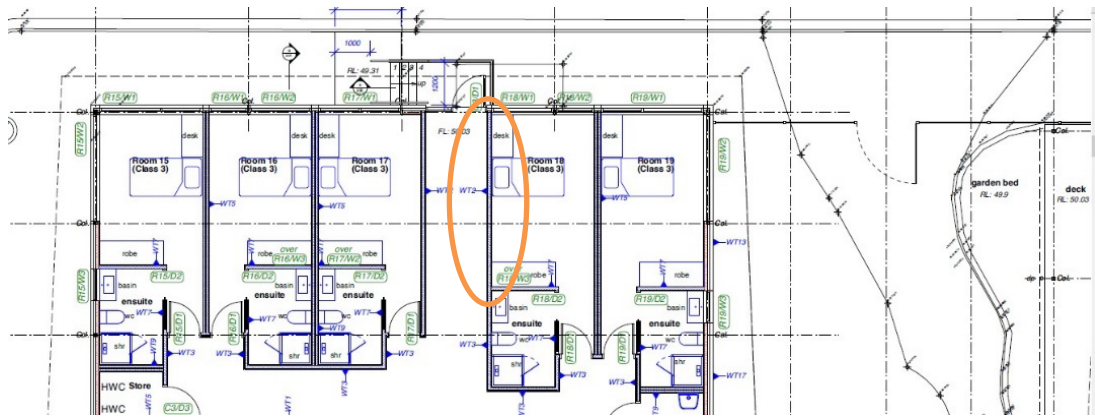
- feeling a sense of connection in a community, which values diversity
- ensuring all people feel respected, supported and included, regardless of a person’s background or differences
- providing and receiving support from other people including emotional support, assistance during times of need, and the sharing of resources.

The artworks in Corridor 3 will be located on an internal wall. The artworks must be on removable panels that can be hung on the wall.

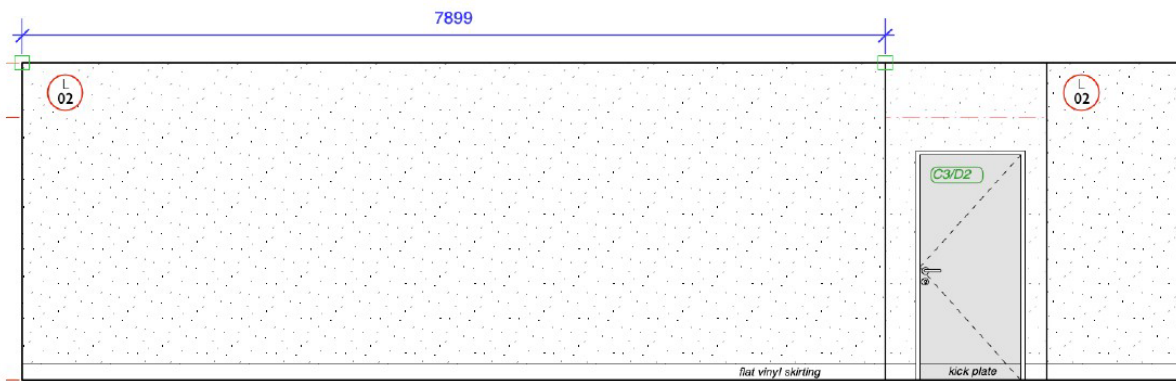
Removable panels may include:

- framed artworks such as drawings, paintings or photographs
- artworks on canvas on stretcher frames
- artwork printed on wood or boards which incorporate a hanging system suitable for the site.





*Floor plan indicating the location of the wall in Corridor 3 near external entrance door.*



2 Corridor 3 1:50

*Elevation of wall in Corridor 3*

This location is a long solid wall. Panels could be arranged as a series on the wall or as a single panel located somewhere on this wall.

Dimensions: the wall is 2800 x 7899mm

Part C

Part B - fence

Part A – Corridor

You can apply online via Smartygrants. You should include

- information about your artistic practice and how you would approach the commission
- a brief biography or CV
- artistic support material – examples of previous work.

Concept drawings will not be required at this stage.

# How it works

## Selection committee

The selection committee for this commission includes:

- Cody Apted, NW Aboriginal Support Officer, TasTAFE
- Lynda Beavan, Student Support Counsellor, TasTAFE
- Sean Crane, Education Manager – Civil Construction, Mining and Resources
- Despina Kessarios, Senior Project Manager, TasTAFE
- Catherine Wolfhagen, Public Art Officer, Arts Tasmania

### Advisory roles only

- Lyndel Holton, Student Support Manager, TasTAFE – Cultural content

Please note that members of the selection committee may nominate a colleague to participate in the selection process on their behalf.

## Selection process

The selection committee will assess all eligible expressions of interest against the criteria below to select a shortlist:

	Shortlist criteria
<b>Quality</b>	Are the key personnel experienced, or have the potential to develop and grow? Is the artist's work distinctive?
<b>Planning</b>	What is the track record of the artist or artist team to manage projects?
<b>Benefit</b>	How would receiving this commission benefit the artist or artist team, the Tasmanian Government Art Site Scheme, the site and the site users?

Shortlisted artists will be asked to prepare a more detailed concept proposal.

The selection committee will choose an artist to work on the commission using the criteria below:

	Artist selection criteria
<b>Suitability</b>	To what extent do the artistic concept, design, materials and delivery method address the brief?
<b>Viability</b>	How feasible is the project given the commission budget, constraints and timelines?



<b>Capability</b>	To what extent does the team demonstrate the necessary skills and experience to deliver the commission?
<b>Vision</b>	How well does the proposal demonstrate a creative or innovative vision in terms of concept, media, construction methods, materials and/or collaborations?

# Commissioning process

## Shortlist process

If you are selected as a shortlisted artist, you will be asked to:

- develop a concept proposal for Part A, Part B and Part C included in this commission. Artists can indicate if they want to be considered for a single part or all three parts.
- Provide an invoice of \$500 after submitting your concept proposals.

The selection committee will consider these proposals against the selection criteria and select an artist or artists to provide artworks as part of this commission.

Proposals could include pre-existing artworks or plans to create new artworks for the spaces.

## Commission agreement

If you are selected to work on the commission, you will be asked to:

- meet with us to discuss arrangements for the commission, such as payment instalments, roles and responsibilities, insurance
- sign a commissioning agreement to confirm this information in writing.

## Detailed design

Once you have signed the commission agreement you will be asked to:

- produce a detailed design plan, including artwork specifications such as drawings, for approval by the project team.
- make sure your installation meets all relevant building standards.
- report regularly to the support team as the project progresses.
- manage all aspects of design through to handover.

## Fabrication and/or installation

Once your detailed design has been approved by the selection committee you will be asked to:

- fabricate and/or install your artwork according to the detailed design plan
- meet all work health and safety and other requirements while on site
- keep us updated on progress and let us know as soon as possible if you need to vary the approved timeframe or design.

## Handover your artwork

Let us know as soon as possible when you are ready to complete your artwork so we can:

- make sure it meets the approved detailed design plan
- provide you with a handover certificate
- document it for our records
- promote it

# General information

## The Tasmanian Government Art Site Scheme

This commission is supported through the Tasmanian Government Art Site Scheme. For information about the scheme please visit [the Arts Tasmania website](#).

## Aboriginal and Torres Strait Island content

If your activity involves Aboriginal or Torres Strait Islander content, your application must provide evidence of how you are working with the Aboriginal community. The Tasmanian Government's Office of Aboriginal Affairs can provide advice on working with Tasmanian Aboriginal people and organisations. Please also refer to Creative Australia's [Protocols for using First Nations Cultural and Intellectual Property in the Arts](#).

## Code of practice

Arts Tasmania encourages artists and arts organisations to comply with the National Association for the Visual Arts' [Code of Practice for Visual Arts, Craft and Design](#).

## Workplace health and safety

Siting artworks in the public domain can result in safety risks for the public and for artists. The Department of State Growth requires that commissioned artists comply with [Tasmania's Work Health and Safety laws](#) and the [State Growth Work Health and Safety Contractor Standards](#).

If selected for the commission, you will need to have public liability insurance cover of at least \$10 million.

## Working with vulnerable people

The [Registration to Work with Vulnerable People Act 2013](#) aims to protect vulnerable persons, including children and young people, from the risk of harm. It requires those working with children and young people to have a current registration and [Working with Vulnerable People \(WWVP\) card](#).

If you are selected for the commission, you will be required to apply for (and receive) registration to work with vulnerable people or have a current registration.

Please visit our website to see Arts Tasmania's [policy on working with children and young people](#)

