



Artist's Brief

Parliament Offices House of Assembly

Commission	Two-dimensional artworks
Eligibility	Tasmanian artists who meet our general eligibility criteria: www.arts.tas.gov.au/grants_and_funding/general_eligibility
Selection process	Expressions of interest, with up to six artists selected to develop concepts
Location	Ground Floor, Salamanca Building 4 Salamanca Place, Hobart
Audience	Members of Parliament, visitors to the offices of Members of Parliament, including community representatives and school groups, and staff
Fee	Shortlist fee \$500 + GST (if applicable) \$70,000 + GST for artwork concept, design, fabrication and installation
Key dates	EOI applications close: Monday 2 June 2025 Shortlist presentation: August 2025 Artwork installed by: January 2026
Contact	Catherine Wolfhagen, Public Art Officer, Arts Tasmania Ph 03 6777 2791 catherine.wolfhagen@arts.tas.gov.au
Apply	www.arts.tas.gov.au/public_art

The commission

Arts Tasmania and the Department of Treasury and Finance invite expressions of interest from Tasmanian artists to create a suite of artworks for identified locations in the additional offices for Members of the House of Assembly (following the restoration of the House of Assembly to 35 Members), located at Salamanca Building, 4 Salamanca Place, Hobart.

Background

The House of Assembly, or Lower House, is one of the two chambers of the Parliament of Tasmania (the other is the Legislative Council or Upper House). It is located in Parliament House in Hobart. At the 2024 State Election the House of Assembly membership was restored to 35, from 25 in the previous parliament. Of the 35 Members of the House of Assembly, seven Members represent each of the five electorates across Tasmania, being Bass, Braddon, Clark, Franklin and Lyons. The Speaker is the Presiding Officer of the House of Assembly and is its independent and impartial representative. The Speaker's role in the House is to maintain order, put questions after debate and conduct divisions. Legislation is initiated in and passed by the House of Assembly and the Legislative Council, with most legislation being initiated in the House of Assembly. The project consists of additional office accommodation for Members of the House of Assembly, following the restoration of the House to 35 Members at the 2024 election, which will also allow for the modernisation of current office accommodation available to Members and their staff. The additional office accommodation is being supplied within the Salamanca Building, Parliament Square, which is a modern building adjacent to and connected with the historic Parliament House (Parliament House having built between 1834 and 1840 in the Georgian colonial style).

For more information about the Parliament of Tasmania visit: [Parliament of Tasmania](#)

Objectives

The commission is for a large-scale artwork or a series of artworks for the walls near the entrance to the new offices for Members of Parliament and other shared office areas of the House of Assembly and Parliament of Tasmania. The artwork could be a series of wall-based artworks or artwork that is digitally printed and applied to the wall.

The artwork will be a prominent visual feature and should create a welcoming atmosphere for people entering the building and accessing the offices of Members of the House of Assembly. The artwork should have a predominately green palette, in keeping with the traditional Westminster green theme that is a foundation colour for Lower Houses in Westminster-style parliaments around the world or include colours that will complement a very neutral interior design. The artwork themes should be suitable for an office space for Members of Parliament and their staff, as well as members of the community who visit Members at Parliament House and should be apolitical in nature. Alternatively, the artwork could have a connection to the themes of democracy and community representation in Tasmania and could have a reference to the five electorates of Tasmania that the Members of the House of Assembly represent.

Specific requirements

- A major artwork is to be located on the main wall in the reception entry area.
- Other locations are shown on the attached plans marked in orange.
- Wall dimensions in order of priority:

Wall	Wall dimensions
Main wall in reception and entry area	2700mm high and 11800mm wide
Wall opposite Party Room	2700mm high and 7100mm wide
Wall in hallway	2700mm high and 4000mm wide

- Artworks should be suitably framed for installation. For example, works on paper should be behind Perspex or glass or works on stretched canvas or boards should be framed to protect the edges.
- The artwork could be digitally printed and applied directly to the wall.
- The number of artworks will depend on the value of the artworks for the fixed budget.
- A range of mediums can be considered if suitable for the site.
- The artwork should have a lifespan of at least 15 years.

Timeframe

Delivery and installation of the artworks will be required by **January 2026** when the office fit-out is completed.

Apply

Please provide a CV, examples of relevant artwork and some information about how you would approach the commission via our website: www.arts.tas.gov.au/public_art

Please indicate clearly on your support material if you are proposing artworks that already exist or if they are an indication of your practice and proposed approach to the commission.

How it works

Selection committee

The selection committee is comprised of building users, capital project managers and representatives of partner agencies. Members of the selection committee may nominate a delegate to attend committee meetings on their behalf.

- Catherine Wolfhagen, Program Officer – Public Art, Arts Tasmania
- Erica Proud, Program Manager, Treasury and Finance Department
- Neil Thristan, Assistant Director Strategic Property Projects
- A Parliament representative

Members of the project team may sometimes nominate a colleague to participate in the selection process on their behalf.

Selection

Stage One: The selection committee will choose up to six artists to develop concepts based on these criteria:

Quality	Are the key people experienced, or have the potential to develop and grow? Do they have a strong artistic practice?
Benefit	How will receiving this commission potentially benefit the artist, building users and the Tasmanian community?

Stage Two: The selection committee will choose an artist to create the design using three criteria:

Quality	How well does the proposal demonstrate a creative or innovative vision? To what extent does the artistic concept address the brief?
Planning	How feasible is the project given the commission budget, constraints, and timelines? To what extent does the artist demonstrate the necessary skills and experience to deliver the commission?
Benefit	How will this commission improve the site for the community? How will receiving the commission benefit the artist?

Concept, detailed design and implementation

If you are selected to work on the commission, you will be asked to:

- Create a concept proposal.
- Develop the detailed design.

- Manage fabrication and installation of the artwork.

Before you start we will meet with you and provide a written agreement which explains the requirements in more detail.

Concept

- Meet with the project team on site to discuss artwork and site requirements.
- Create sketches and other documentation to communicate your concept.
- Meet with the project team to present your concept.

Detailed design

- Produce a detailed design plan, including artwork specifications such as drawings, for approval by the project team.
- Make sure your installation meets all relevant building standards.
- Report regularly to the support team as the project progresses.
- Manage all aspects of design through to handover.

Implementation

- Work with the project support team to plan fabrication and installation.
- Comply with all relevant building regulations and standards.
- Consult with Arts Tasmania if you need to vary the approved timeframe or design.

General information

The Tasmanian Government Art Site Scheme

This commission is supported through the Tasmanian Government Art Site Scheme. For information about the scheme please visit [the Arts Tasmania website](#).

Aboriginal and Torres Strait Island content

If your activity involves Aboriginal or Torres Strait Islander content, your application must provide evidence of how you are working with the Aboriginal community. The Tasmanian Government's Office of Aboriginal Affairs can provide advice on working with Tasmanian Aboriginal people and organisations. Please also refer to Creative Australia's [Protocols for using First Nations Cultural and Intellectual Property in the Arts](#).

Code of practice

Arts Tasmania encourages artists and arts organisations to comply with the National Association for the Visual Arts' [Code of Practice for Visual Arts, Craft and Design](#).

Workplace health and safety

Siting artworks in the public domain can result in safety risks for the public and for artists. The Department of State Growth requires that commissioned artists comply with [Tasmania's Work Health and Safety laws](#) and the [State Growth Work Health and Safety Contractor Standards](#).

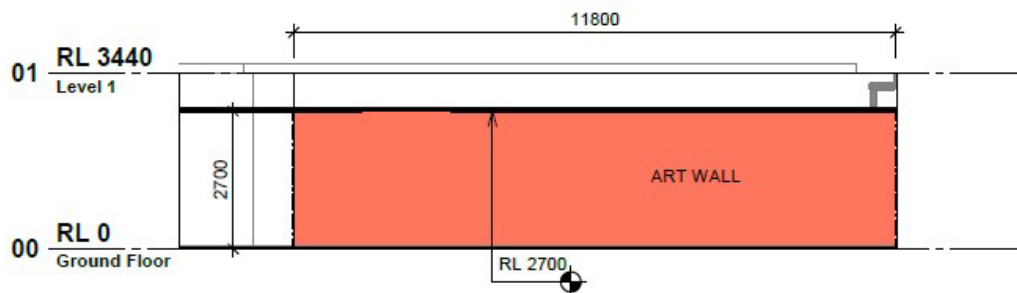
If selected for the commission, you will need to have public liability insurance cover of at least \$10 million.

The floor plan illustrates the second floor of a building, featuring a variety of functional spaces. The layout is organized around a central circulation core. Key areas include:

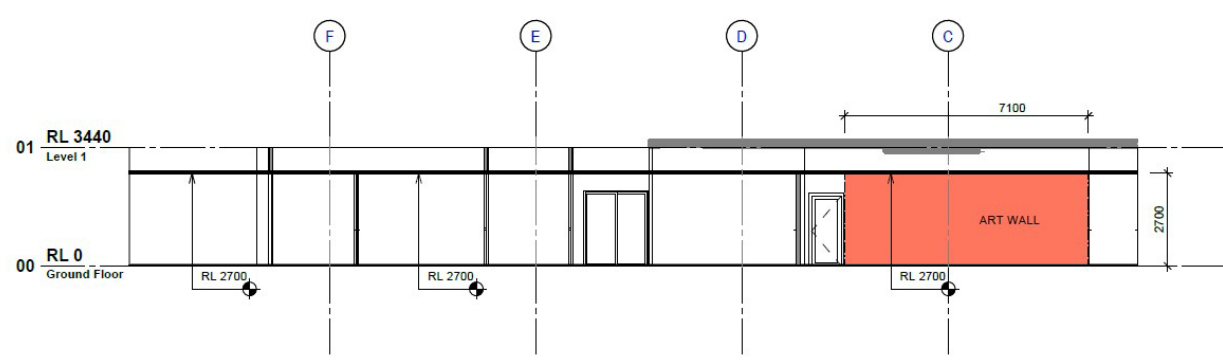
- Offices:** Multiple individual offices (MPO 01 to MPO 17) and open office spaces (RMD2, RMD3) are distributed throughout the plan.
- Reception and Circulation:** Reception areas (RMD1, RMD2) and circulation spaces (CIRCULATION OFFICE, CIRCULATION) facilitate movement and visitor management.
- Support Spaces:** A kitchen (RMD6), server room (RMD7), storage (RMD7), and a party room (RMD5) provide essential support functions.
- Meeting and Collaboration:** A small meeting room (RMD4) and an opposition leader's office (MPO 08A) offer spaces for focused work and collaboration.
- Art and Design:** An art wall is highlighted in the plan, indicating a designated area for artistic display.

The plan is overlaid with a grid system (A-G) and includes a north arrow for orientation. Room labels and dimensions are provided for each space, ensuring clarity and precision in the architectural representation.

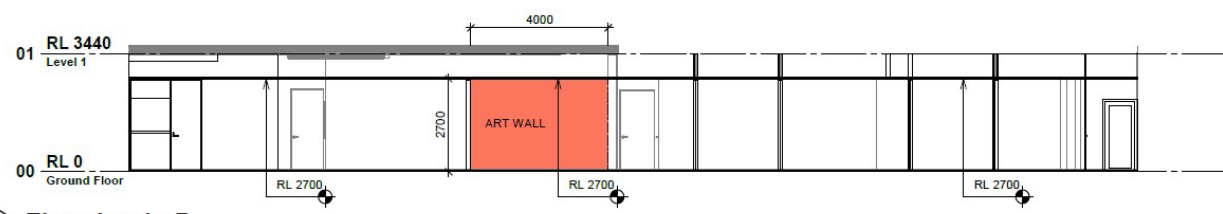
Identified walls are marked in orange



5 **Elevation 1 - C**
 REFER: A-2200
 SCALE: 1 : 100



3 **Elevation 1 - A**
 REFER: A-2200
 SCALE: 1 : 100



4 **Elevation 1 - B**
 REFER: A-2200
 SCALE: 1 : 100