



# Artist's Brief

## Glenorchy Sports Centre 2D artwork

<b>Commission</b>	Interior two-dimensional or low relief artwork in two locations
<b>Eligibility</b>	Tasmanian artists who meet our <a href="#">general eligibility criteria</a>
<b>Selection process</b>	<p>The selection committee will consider all eligible applications against the selection criteria. The committee will:</p> <ul style="list-style-type: none"><li>• select an artist for the commission, or</li><li>• shortlist artists to develop their ideas further (each shortlisted artist will receive a fee of \$500)</li></ul>
<b>Location</b>	61 Claremont Link Road, Claremont, Tasmania 7011
<b>Audience</b>	Community and members of sporting groups
<b>Fee</b>	<p>Part A – \$46,000 + GST (if applicable) for artwork concept, detailed design, fabrication, delivery of artwork to site, hardware for installation and project management</p> <p>Part B – \$26,000 + GST (if applicable) for artwork concept, detailed design, fabrication and project management</p>
<b>Key dates</b>	<p>Applications close: <b>Monday 23 February 2026</b></p> <p>Artwork installed by: TBC December 2026</p>
<b>Contact</b>	<p>Mish Meijers, Public Art Officer</p> <p>Phone: 03 6165 6672</p> <p>Email: <a href="mailto:mish.meijers@arts.tas.gov.au">mish.meijers@arts.tas.gov.au</a></p>
<b>Apply</b>	<a href="http://www.arts.tas.gov.au/public_art">www.arts.tas.gov.au/public_art</a>

# The commission

The Department of State Growth invites submissions from Tasmanian artists to create an engaging wall-based artwork for the multi-purpose courts space in the new Glenorchy Sports Centre.

## Background

The new \$28 million Glenorchy Sports Centre will be located on unused land at Claremont College. It will serve the broader community as well as Claremont College students and staff.

The centre will house four indoor multi-use courts for sports including basketball, netball, volleyball, futsal, pickleball, badminton and wheelchair sports. It will include amenities for players, visitors, staff, and volunteers, and will have multi-purpose spaces that can be hired by community members for a variety of activities.

The centre will be designed to meet the diverse needs of the community and increase accessibility to sports in southern Tasmania.

Construction is expected to start the beginning of 2026 and be completed around April 2027.

For more information about Glenorchy Sports Centre visit:

[https://www.infrastructure.tas.gov.au/major\\_projects/glenorchy\\_sports\\_centre](https://www.infrastructure.tas.gov.au/major_projects/glenorchy_sports_centre)

## Part A and Part B - commission objectives

Artists are invited to propose engaging and dynamic artwork for two locations in the large interior multi-use court sports hall at the new Glenorchy Sports Centre.

Artists may propose artwork for either or both Part A and Part B of the commission. The selected artworks will be complementary to each other, as they will be installed on adjacent walls.

Artists can consider any concept that could appeal to a wide audience or may like to refer to the following:

- surrounding landscape
- natural features of the surrounding area including the mountain, river, rivulet and green belt and natural grassy amphitheatre outside directly on the site
- abstract or representational imagery
- stories relating to the local area or community
- sports or community related activities.

## Part A – wall-based artwork

Artists are invited to propose a significant two-dimensional and/or low relief artwork for a feature wall in the new Glenorchy Sport Centre sports hall. The artwork will become an important part of the visitor experience with a wide range of community members using the space to play or watch sports.

The area for the artwork is high above the tiered seating and will be installed by the project builders (installation costs will be covered by the project not the artist's budget).

Artwork designs should cover a significant portion of available area as marked below and could be a series of standard panels to make one large artwork OR elements that are strategically installed across area. Low relief artworks or two-dimensional artwork applied to panels or a combination of both could work well for the site.

The base wall will be skinned with cement sheet and is currently going to be painted a light grey. Artists may be able to have some input on the base colour.

Artists can choose any substrate to attach to the above that are robust and long lasting. Including materials such as wood, metal, acrylic or aluminium composite material etc. **There is a weight limit of approximately 12kg per each square metre.**

Panels or elements could be:

- timber, metal, acrylic or acoustic panel
- cut out shapes, routed/ or built-up/low relief elements
- painted artwork on panels
- digitally printed artwork on panel or vinyl

## Delivery and Installation

Artists will deliver the completed artwork to the Glenorchy Sports Centre mid-December 2026 to allow builders to install. This date will be confirmed post the developed design phase.

All fixing hardware will be supplied by the artists and follow Australian Standards for weight etc. Fittings and method may be required to be approved at developed design phase by the projects structural engineer.

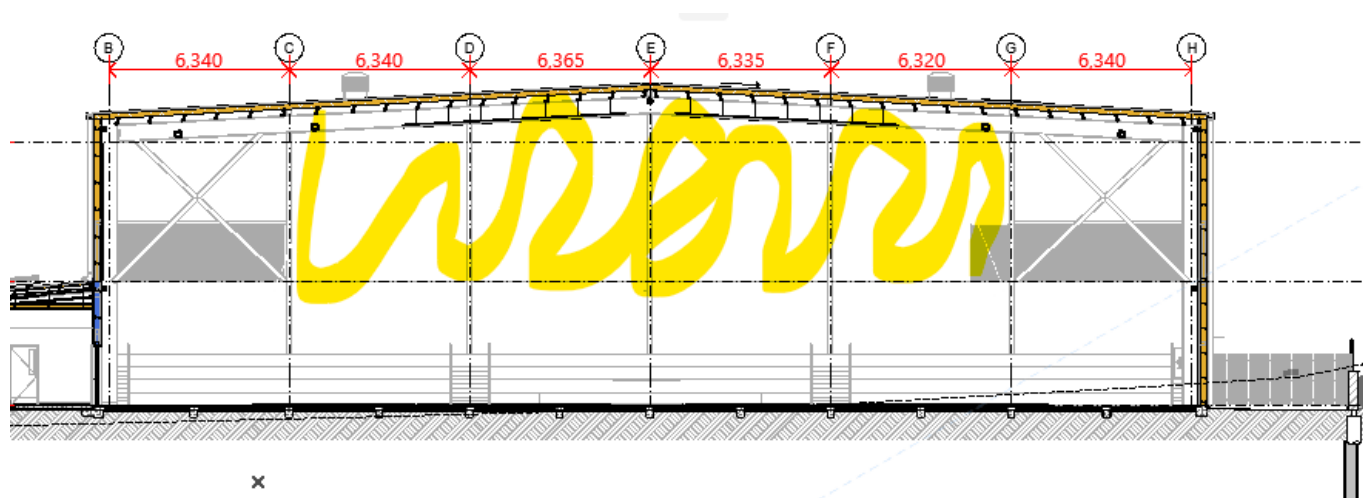
Artists will be required to be onsite and available for consultation during the installation.

The selected artist will need to provide a clear layout plan with instruction for builders as part of the Developed Design Package (DDP).

## Artwork area dimensions – Part A

The area available for artwork is approximately – 6 metres high x 26 metres long.

The artwork area is marked in yellow on the elevation below. The wall is broken up by exposed columns.



## Part B – acoustic panel artwork

Artists are invited to propose large scale digital designs that will feature across the acoustic panels on one wall (see section DD elevation) of the sports hall.

The artwork should have distinct focal points distributed across the available area to create visual interest and flow throughout the space. Artists should refer to the themes above or may choose their own that would widely appeal to a broad audience.

The design should consider the overall area but coverage of the entire area which is approximately 5.8 metres high x 100 metres long is not required.

Artists will be required to provide a clear plan that show the number of acoustic panels required for the artwork and the sequence of identified panels for installation.

Artists are required to be onsite for consultation and to ensure the order of artwork panels is installed correctly.

The acoustic panel is a textured material made from wood and cement as seen to the right and each panel is 1200 x 600 cm.

The acoustic panels will be supplied by the project to the artist approximately 6 to 8 weeks before installation. The artist's budget will cover the costs of design, file preparation, project management, costs associated with painting and routing of artwork to panels, transport to and from painters to the site.



Some indicative prices are provided below – though this will likely vary between painters.

## Part B – logistics and information on acoustic panels

The selected artist will need to work in with the project schedule which may be subject to change. Currently scheduled installation of the acoustic panels is August/September 2026.

The professional paint services must work to provided technical specifications to ensure the acoustic qualities are not affected. Indicative pricing for spray painting is approximately \$15 per m2 for a single colour and \$25 per m2, if masking is required.

Artists will have access to the panels 6 to 8 weeks before installation and will need to arrange the professional spraying and or routing of panels with a CNC machine. Specifications will be provided to the selected artist.

Artists should be aware of the fixing method for the panels will be screwed through the face of the panel in accordance with manufacturers installation guides.

The supplier of the acoustic panel will warrant the acoustic panels (for 10 years) and the paint supplier will be required to warrant the paint system for the same 10 year period.

A video showcasing some CNC routing and colouring on acoustic panels can be viewed below:

## Apply

You can apply online via SmartyGrants. Your application should include:

- information about your artistic practice
- a description of how you would approach the commission
- a brief biography or CV
- artistic support material – examples of previous work and initial sketches of your concept.

## How it works

### Selection committee

The selection committee is comprised of building users, capital project managers and representatives of partner agencies, as listed below in alphabetical order.

- Kate Croall, Senior Project Coordinator, Major Infrastructure Projects, Department of State Growth
- Lauren Barnes, Senior Associate, ARTAS Architects
- Louise Butterworth, Senior Project Manager, Major Infrastructure Projects, Department of State Growth
- Mish Meijers, Public Art Officer, Arts Tasmania, Department of State Growth

Members of the selection committee may sometimes nominate a colleague to participate in the selection process on their behalf.

### Selection process

The selection committee will choose an artist to work on the commission using four criteria, as follows:

<b>Suitability</b>	To what extent do the artistic concept, design, materials and delivery method address the brief?
<b>Viability</b>	How feasible is the project given the commission budget, constraints and timelines?
<b>Capability</b>	To what extent does the team demonstrate the necessary skills and experience to deliver the commission?
<b>Vision</b>	How well does the proposal demonstrate a creative or innovative vision in terms of concept, media, construction methods, materials and/or collaborations?



# Commissioning process

## Commission agreement

If you are selected to work on the commission, you will be asked to:

- meet with us to discuss arrangements for the commission, such as payment instalments, roles and responsibilities, insurance
- sign a commissioning agreement to confirm this information in writing

## Detailed design development

Once you have signed the commission agreement you will be asked to:

- produce a detailed design plan to realise your concept, including artwork specifications such as drawings
- make sure your design meets all relevant building standards
- report regularly to the project team as the commission progresses
- manage all aspects of design through to handover

## Fabrication and/or installation

Once your detailed design has been approved by the project team you will be asked to:

- fabricate and/or install your artwork according to the detailed design plan
- work with the Construction Contractor and relevant sub-contractors to complete the installation of the artwork, in accordance with the required program dates.
- meet all work health and safety and other requirements while on site, and for this commission you must have an up-to-date white card
- keep us updated on progress and let us know as soon as possible if you need to vary the approved timeframe or design

## Handover your artwork

Let us know as soon as possible when you are ready to complete your artwork so we can:

- make sure it meets the approved detailed design plan
- provide you with a handover certificate
- document it for our records
- promote it.

# General information

## The Tasmanian Government Art Site Scheme

This commission is supported through the Tasmanian Government Art Site Scheme. For information about the scheme please visit [the Arts Tasmania website](#).

## Aboriginal and Torres Strait Island content

If your activity involves Aboriginal or Torres Strait Islander content, your application must provide evidence of how you are working with the Aboriginal community. The Tasmanian Government's [Office of Aboriginal Affairs](#) can provide advice on working with Tasmanian Aboriginal people and organisations. Please also refer to Creative Australia's [Protocols for using First Nations cultural and intellectual property in the arts](#).

## Code of Practice

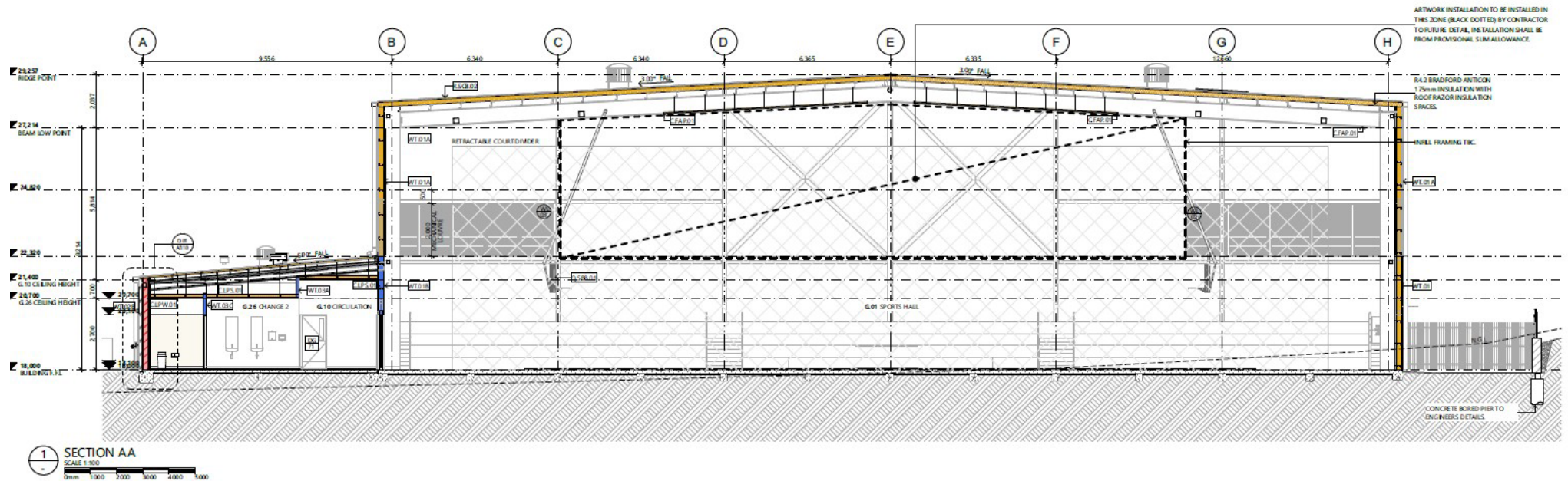
Arts Tasmania encourages artists and arts organisations to comply with the National Association for the Visual Arts' [Code of Practice for Visual Arts, Craft and Design](#).

## Workplace health and safety

Siting artworks in the public domain can result in safety risks for the public and for artists. The Department of State Growth requires that commissioned artists comply with [Tasmania's Work Health and Safety laws](#) and the [State Growth Work Health and Safety Contractor Standards](#).

If selected for the commission, you will need to have public liability insurance cover of at least \$10 million.

Part A – Section AA - elevation black dotted line shows area for artwork

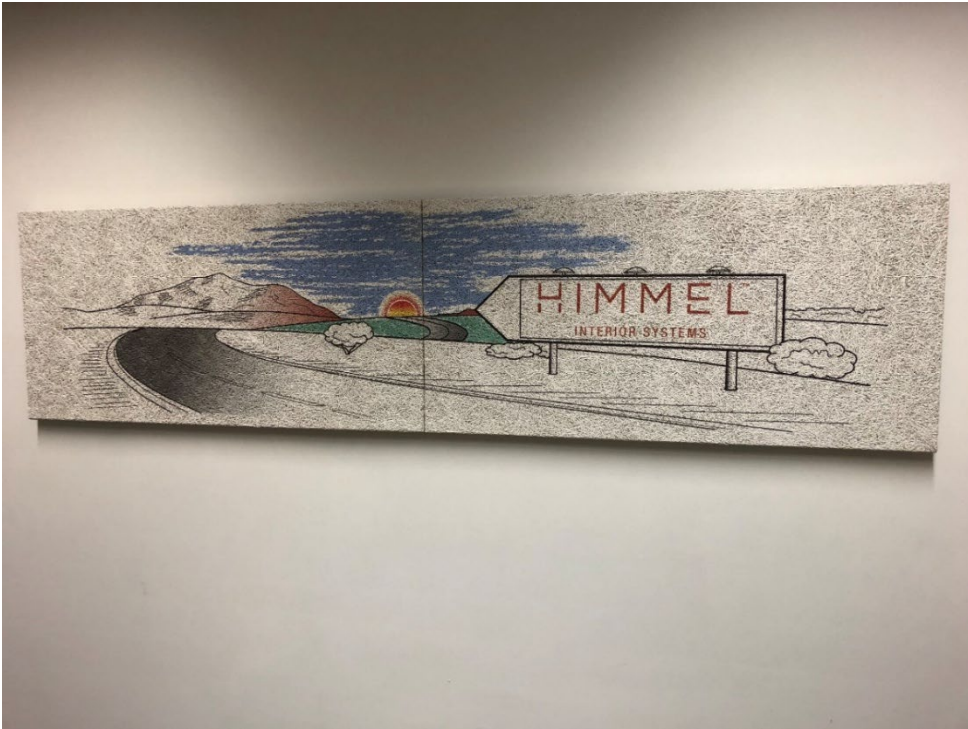


### Part B – Section DD – elevation with marked acoustic panels





## Part B – examples of block coloured acoustic material and a design sprayed onto surface



The CNC sprayed Himmel image cost approximately \$190 per panel.

This level of detail would not suit the entire available area, but artists may choose to design areas of higher detail alongside broader areas of a single colour.

