



Artist's Brief

Bicheno Ambulance Station

| | |
|--------------------------|--|
| Commission | Artwork panels on external concrete walls and printed vinyl artworks on glass windows |
| Eligibility | Tasmanian artists who meet our general eligibility criteria |
| Selection process | <p>The selection committee will consider all eligible applications against the selection criteria. The committee will then:</p> <ul style="list-style-type: none">• select an artist for the commission, or• shortlist artists to develop their ideas further (each shortlisted artist will receive a fee of \$1,000) |
| Location | 19 Sinclair Street, Bicheno |
| Audience | Staff and members of the community |
| Fee | \$34,000 + GST (if applicable) for artwork concept, detailed design, fabrication and installation |
| Key dates | <p>Applications close: Monday 16 February 2026</p> <p>Artwork installed by: TBC August 2026</p> |
| Contact | <p>Catherine Wolfhagen, Public Art Officer</p> <p>03 6777 2791</p> <p>catherine.wolfhagen@arts.tas.gov.au</p> |
| Apply | <p>www.arts.tas.gov.au/public_art</p> |

The commission

Arts Tasmania and Ambulance Tasmania invite submissions from Tasmanian artists to create artwork for the new Bicheno Ambulance Station.



Background

Bicheno is a coastal town on Tasmania's east coast with a population of around 950. The town is both a working fishing community and a popular holiday destination. Fishing and tourism are the economic forces driving the town, creating a unique blend where visitors can experience both working maritime heritage and the natural beauty that defines this seaside town.

The new ambulance station in Bicheno is part of Tasmania's broader infrastructure program to build six new ambulance stations across rural and regional areas, including Bridgewater, Oatlands, Longford, Queenstown and Beaconsfield.

For more information about Ambulance Tasmania, please visit: [Ambulance services for Tasmanians | Tasmanian Department of Health](#)

Objectives

Ambulance Tasmania would like to commission connected artworks for two locations in the new Bicheno Ambulance Station.

Artists are invited to propose artwork designs to be either painted or printed onto panels applied to the external concrete walls that form part of the courtyard. These walls face Sinclair Street, at the front of the building.

The chosen artwork design will also be incorporated onto printed vinyl for the glass windows at the front of the building facing the street.

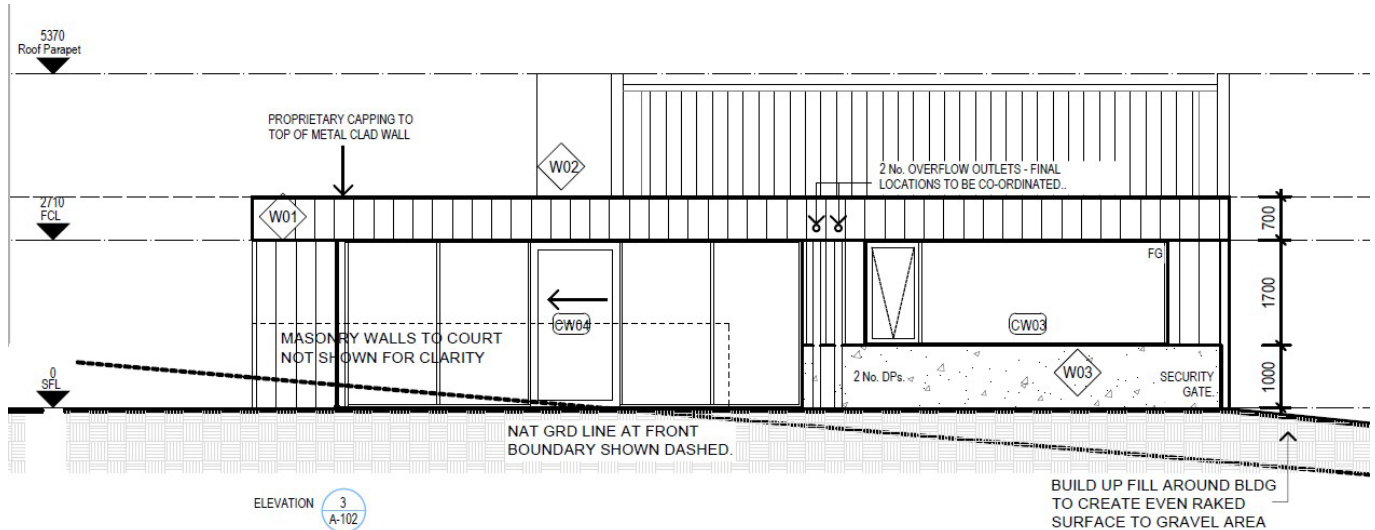
Ambulance Tasmania would like artworks to brighten up the building and create a point of interest for the courtyard. The interior courtyard will only be seen by Ambulance Tasmania staff, volunteers and visitors.

Part A – Artwork on panels for Concrete walls

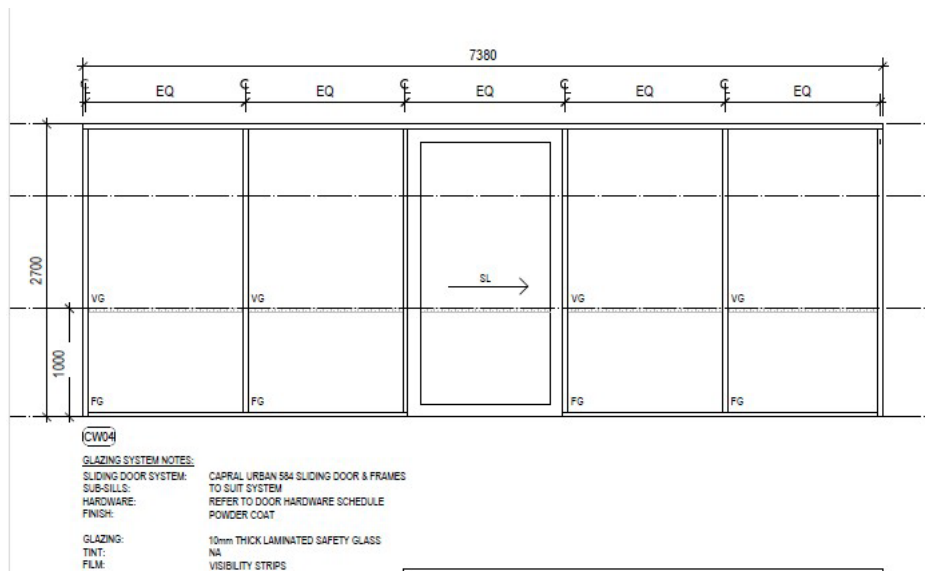
-
- The site plan shows a rectangular courtyard area. The top boundary is labeled "ELEVATION 03" with a width of 7700. The bottom boundary is labeled "ELEVATION 01" with a width of 7320. The left boundary is labeled "ELEVATION 02" with a height of 4000. The right boundary is labeled "ELEVATION 01" with a height of 3810. The courtyard is labeled "COURTYARD" and "PAVERS AS SPECIFIED". A "GRATED DRAIN TO RUN LENGTH OF COURTYARD WALL" is indicated along the top wall. A "FALL TO DRAIN 1:200" is shown with an arrow pointing towards the drain. The top wall is labeled "PRECAST CONCRETE WALLS". The plan also shows a grid of pavers and a drainage system.

Part A - Printed vinyl on windows

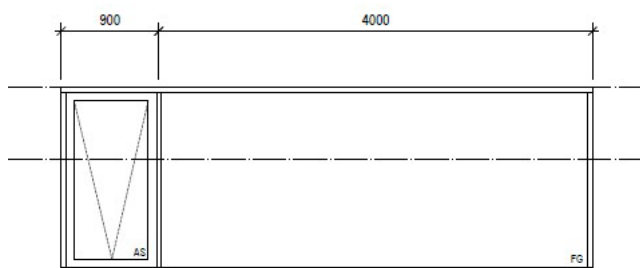
- The printed vinyl is to be adhered to the windows at the front of the building facing south.
- The identified windows are in the training room and staff day room.
- The vinyl artworks should be semi-transparent to provide privacy for staff (especially at night) while allowing natural light to filter through.
- The artworks will be seen from both inside and outside the building, and artists should consider this in their design.



Elevation of windows on front of the building facing Sinclair Street (not showing courtyard)



Dimensions of the full windows and sliding door (CW04)



Dimensions of the window above the wall (CW03)

Apply

Please provide a CV, examples of relevant artwork and some information about how you would approach the commission via [our website](#).

How it works

Selection committee

The selection committee is comprised of building users, capital project managers and representatives of partner agencies.

- Adam Garrigan, Project Manager, Department of Health
- Brendan Smith, Manager Support Services, Ambulance Tasmania
- Catherine Wolfhagen, Public Art Officer
- John Padas, Archadia Architects

Selection process

The selection committee will choose an artist to work on the commission using four criteria, as follows:

| | |
|--------------------|---|
| Suitability | To what extent do the artistic concept, design, materials and delivery method address the brief? |
| Viability | How feasible is the project given the commission budget, constraints and timelines? |
| Capability | To what extent does the team demonstrate the necessary skills and experience to deliver the commission? |

| | |
|---------------|---|
| Vision | How well does the proposal demonstrate a creative or innovative vision in terms of concept, media, construction methods, materials and/or collaborations? |
|---------------|---|

Please note that members of the selection committee may sometimes nominate a colleague to participate in the selection process on their behalf.

Commissioning process

Commission agreement

If you are selected to work on the commission, you will be asked to:

- meet with us to discuss arrangements for the commission, such as payment instalments, roles and responsibilities, insurance
- sign a commissioning agreement to confirm this information in writing

Detailed design development

Once you have signed the commission agreement you will be asked to:

- produce a detailed design plan to realise your concept, including artwork specifications such as drawings
- make sure your design meets all relevant building standards
- report regularly to the project team as the commission progresses
- manage all aspects of design through to handover

Fabrication and/or installation

Once your detailed design has been approved by the project team you will be asked to:

- fabricate and/or install your artwork according to the detailed design plan
- meet all work health and safety and other requirements while on site
- keep us updated on progress and let us know as soon as possible if you need to vary the approved timeframe or design

Handover your artwork

Let us know as soon as possible when you are ready to complete your artwork so we can:

- make sure it meets the approved detailed design plan
- provide you with a handover certificate
- document it for our records
- promote it.

General information

The Tasmanian Government Art Site Scheme

This commission is supported through the Tasmanian Government Art Site Scheme. For information about the scheme please visit [the Arts Tasmania website](#).

Aboriginal and Torres Strait Island content

If your activity involves Aboriginal or Torres Strait Islander content, your application must provide evidence of how you are working with the Aboriginal community. The Tasmanian Government's Office of Aboriginal Affairs can provide advice on working with Tasmanian Aboriginal people and organisations. Please also refer to Creative Australia's [Protocols for using First Nations Cultural and Intellectual Property in the Arts](#).

Code of practice

Arts Tasmania encourages artists and arts organisations to comply with the National Association for the Visual Arts' [Code of Practice for Visual Arts, Craft and Design](#).

Workplace health and safety

Siting artworks in the public domain can result in safety risks for the public and for artists. The Department of State Growth requires that commissioned artists comply with [Tasmania's Work Health and Safety laws](#) and the [State Growth Work Health and Safety Contractor Standards](#).

If selected for the commission, you will need to have public liability insurance cover of at least \$10 million.

Working with vulnerable people

If the project involves working with people under the age of 18, or working in a school or child care centre, the selected artist must ensure that:

- They abide by all relevant laws and regulations that apply in Tasmania, and any other jurisdictions in which the Approved Purpose is taking place.
- all collaborators and contractors engaged to work on site hold a "Registration to work with vulnerable people" pursuant to the [Registration to Work with Vulnerable People Act 2013](#).

Details on the requirements in Tasmania are available below:

- [Keeping Children Safe](#)
- [Consumer, Building and Occupational Services](#)

Applicants are also strongly encouraged to follow Creative Australia's protocols for working with children. For more information, see the [Children in Art Protocols](#).



Floor plan of the Bicheno Ambulance Station

Courtyard is facing east on Sinclair Street

Artwork locations are the front of the building facing Sinclair Street