

RM number: 077150

ARTIST'S BRIEF

Peacock Centre refurbishment – artwork commission

Project summary	
Commission	Outdoor ground-based artwork for arrival pathway
Client	Department of Health
Commissioner	The Tasmanian Government Art Site Scheme
Location	Peacock Centre
Audience	Service users, visitors and staff
Artwork budget	\$36 000 (+ GST)
Applications close	15 March 2021
Installed by	December 2021

Project background

The Department of Health is redeveloping the Peacock Centre after it was damaged by fire in 2016. The new centre will be a 'Mental Health Integration Hub'. It will provide integrated and community-based mental health care and bring together a range of care and support services in the one location to support people with their recovery.

This model aims to reduce hospital admissions for Tasmanians living with mental illness and reduce the likelihood of people needing readmission to hospital, consistent with the aims of the Tasmanian Mental Health Reform Program.

The new centre will be open 24 hours a day with staff who are able to provide short stay residential services and a range of day programs.

The centre will continue to occupy the heritage building known as Ruardean, built in North Hobart by the Peacock family. The original building will be restored and have extensions added. It will be designed to provide an open, warm and home-like environment.

The gardens at the site and the original glass house will also be restored. They will be used for therapeutic programs to help improve consumer health and wellbeing, such as gardening and craft.

The new centre will be designed to be a warm and welcoming environment for all people. The aim is for the centre to feel more like walking into a home than a mental health facility.

Key ideas and purpose of commission

The Department of Health would like to commission an artwork to complement the recovery-led approach of the new centre and contribute to a sense of welcome and safety.

Patients and visitors will enter from Elphinstone Road and walk along a concrete path through a peaceful garden space (approximately 30 metres long – see attached plans). Service users arriving for the first time may experience uncertainty or trepidation. The artwork is intended to help them transition from the busy urban environment and provide an introduction to the quieter and more home-like atmosphere of the centre.

Artists could propose a ground-based trail or series a linear artworks, including either:

- tiles, mosaic, panels or other 2D elements inset along the path surface, or
- low sculptural elements to provide markers alongside the path, in the raised garden beds.

If desired, artists could propose that elements be lit with low voltage outdoor lighting.

The use of natural materials and colours is preferred.

Artwork could also reflect or acknowledge the histories of the land occupied by the site, including its Tasmanian Aboriginal heritage and custodianship, to provide a connection with place.

Artform

Contemporary Tasmanian sculptors, object designers and visual artists are encouraged to apply for this commission. Artists working in other media will also be considered, providing they can address the brief. Artists may submit solo or collaborative applications.

Design considerations

The Department of Health will be responsible for installing the selected artworks and the artist will be required to provide suitable drawings and instructions to the Department's project manager and relevant contractors to allow this to occur in a safe and timely manner. This can be discussed in the detailed design stage.

The successful artist will be required to supply information about maintenance requirements for the artworks. The artworks should be very low maintenance and should have a lifespan of at least 15 years. Consideration must be given to the fact that the artwork will be in the public domain and may, therefore, be subject to climatic conditions, vandalism and wear and tear.

Please see Appendix A for other important information about the commissioning process, including artist role and responsibilities.

Artists are encouraged to discuss their ideas with the Program Officer - Public Art whilst developing their submissions.

Aboriginal cultural content

If your activity involves Aboriginal or Torres Strait Islander content, your application must provide evidence of how you are working with the Aboriginal Community. Please refer to [Respecting Cultures](#) for more information about working with the Tasmanian Aboriginal community and Aboriginal artists.

Budget

The artwork budget is intended to cover all costs associated with the design, fabrication and certification of artwork. The Department of Heath will be responsible for minimal costs associated with installing the artwork, subject to suitable provision of instructions by the artist.

Artist costs may include design fee, labour, transport, any certification costs, insurance, travel, project management fee if subcontractors are engaged by the artist, contingency allocation and any other costs normally borne by independent contractors. If the artist is bound by an exclusive contract to a commercial gallery it is their responsibility to notify the gallery and negotiate commission fees which may require payment.

While artists will need to estimate relevant costs to ensure they are able to deliver the proposed artwork if awarded the commission a budget is not required for the application. A firm budget will be required as part of the Detailed Design Package. A sample budget template is available on the Arts Tasmania website: http://www.arts.tas.gov.au/public_art

Selection criteria

- Quality of the proposal in terms of the strength of concept and evidence of imagination, originality and inquisitiveness
- Calibre of the applicant as evidenced by their relevant experience and qualifications as a professional contemporary artist and in the quality of their previous work as demonstrated by their support material
- Suitability and viability of the artist's proposed approach to the commission and their capacity to professionally manage and deliver the project
- Benefit of the commission to the development of the state public art collection and to the artist's own professional practice
- Ability of the proposed artwork to enrich the public environment and enhance the general public's access to, and understanding of, contemporary art from diverse fields of practice

Selection committee	
Arts Tasmania	David Patman, Program Officer – Public Art
Department of Health	Mark Leis, Project Manager
Peacock Centre	Angela Proposch, Principal Officer, Community Mental Health and Wellbeing
Architect	Peter Scott, X Squared Architects

Applicants wishing to clarify information regarding the commission should contact the Program Officer – Public Art in the first instance, rather than other members of the Selection Committee.

Timeline

The closing date for applications is **Monday 15 March 2021**. Applications must be completed and lodged online by 11:59pm on the closing date. Support material must be uploaded as part of your application and will not be accepted separately.

The proposed deadline for the installation of artwork will be December 2021.

Online applications

Online applications consist of:

- applicant's details
- a 50-word description
- a maximum 500-word description of the artist's concept proposal.
- a maximum 250-word description of the artist's professional skills and experience.
- support material, as detailed in the online application form, which gives a clear indication of the quality of the artist's previous contemporary artwork. Some support material can be used to illustrate the proposed artwork concept.
- a current résumé, maximum two pages, for each key artist proposed for the commission.

NOTE: additional material will not be accepted.

Artists are encouraged to discuss their applications with the Program Officer – Public Art before submission.

Enquiries

David Patman
 Program Officer – Public Art
 Arts Tasmania
 Tel 03 6165 6665
david.patman@arts.tas.gov.au

APPENDIX A: INFORMATION FOR ARTISTS

Tasmanian Government Art Site Scheme

Background

The Tasmanian Government Art Site Scheme, established in 1979, is the oldest continuous public art scheme in Australia. It is a significant, Tasmanian public art collection of works including paintings, prints, ceramics, glass, sculpture, furniture, photography and installation work. The collection forms part of the living public heritage for the people of Tasmania.

Public artworks from the collection are located throughout the state, in both rural and metropolitan areas. They are appreciated in a wide range of public buildings including offices and open spaces and across all government departments.

The Scheme has created a vital interface between the state's professional artistic community and the general public and has generated significant employment opportunities for artists.

The Tasmanian Government Art Site Scheme has a number of ongoing benefits for both artists and audiences. By visually enriching public buildings and spaces in the public arena, the Scheme enhances public access to and understanding of contemporary art from diverse fields of practice. The Scheme provides artists with professional development opportunities and the chance to reach diverse communities and audiences with their work. It also provides a positive example of the social, cultural, community and economic benefits of the arts to the wider community.

Administration

Arts Tasmania is a division of the Department of State Growth. Arts Tasmania's Program Officer - Public Art:

- manages the commission and purchase of artwork projects through to their completion
- negotiates with all parties in the development of the Artist's Brief
- establishes the Selection Committee to coordinate selection of the artist
- seeks the relevant Ministerial approvals
- arranges contracts and payments
- manages approval of the Detailed Design Package
- inspects and documents completed commissions
- authorises final acceptance of commissions in consultation with other relevant stakeholders
- forwards the Artist's Statements and the Artwork Manual to the client and building user
- advises the client and building user of processes that need to be followed in the case of repairs, maintenance or decommissioning of the works after the artworks are handed over to the client and building user.

Arts Tasmania is responsible for overseeing the operation of the Scheme.

The objectives of the Scheme are detailed in the Tasmanian Government Art Site Scheme Handbook.

Summary of the commissioning process

1. Brief advertised (Program Officer – Public Art available for advice about application development)
2. Applications reviewed by selection Committee meets to select artist for commission, OR shortlists a selected number of artists
3. If a shortlist is compiled, shortlisted artists present more detailed design to the Selection Committee
4. Artist contracted (Stage 1)
5. Artist develops Detailed Design Package after consultation with all relevant stakeholders
6. Detailed Design Package presented for consideration by relevant stakeholders
7. Detailed Design Package approved and permission to proceed with fabrication and installation received (Stage 2)
8. Artist fabricates and co-ordinates with relevant stakeholders re installation
9. Any proposed changes that occur after approval of the Detailed Design Package must be submitted to Arts Tasmania for approval by all relevant stakeholders in writing prior to implementation
10. Installation completed and certified by the artist's qualified consultants as required
11. Arts Tasmania notified of completion
12. Handover inspection undertaken by Arts Tasmania and any other relevant stakeholder as required
13. Acceptance of commission upon successful handover inspection by relevant stakeholders
14. Artist provides actuals budget report and receives final payment (Stage 3)

Workplace health and safety

Siting artworks in the public domain can result in safety risks – for the public and for artists.

The risks to the public from the display of the artwork are mitigated through engineering approvals and sign-offs and through ensuring compliance with the Building Code of Australia and Australian Standards.

The risks to the artist and the risks to the public from the artist's actions whilst on-site during the installation of the artwork need to be managed by the artist through risk mitigation strategies appropriate to the level of risk identified. Commissioned artists will need to provide Arts Tasmania with a Clearance to Work Certificate and Risk Assessment (RA) and any additional paperwork required as part of their Detailed Design Package presentation.

In scoping the commission, Arts Tasmania recognise that hazards may be present with the artist's work on site. These will be communicated to the artist through a Scope of Work Risk Assessment which will be provided while the Detailed Design Package presentation is under development. Hazards identified through the Scope of Work Risk Assessment must be addressed in the Clearance to Work Certificate and Risk Assessment, along with any others identified during the development of the design idea.

Working with vulnerable people

The Registration to Work with Vulnerable People Act 2013 aims to protect vulnerable persons from the risk of harm. It requires those working with children to have a current registration and Working with Vulnerable People (WWVP) card.

For projects that are located in a school, library, a child and family centre or a location where children will be on site, for example a children's ward in a hospital, the selected artist must be registered to work with vulnerable people. If you are employing contractors or sub-contractors they will also need to comply with these requirements.

Your registration needs to be current for the duration of your time on-site. Details and the online application form can be found here: www.justice.tas.gov.au/working_with_children. Please note that this registration does incur a cost.

For commissions that include the depiction and employment of children in artworks, exhibitions and publications, artists should familiarise themselves with the Australia Council's protocols for working with children which can be found here: www.australiacouncil.gov.au/funding/children-in-art-protocols.

APPENDIX B: SITE PLANS AND IMAGES

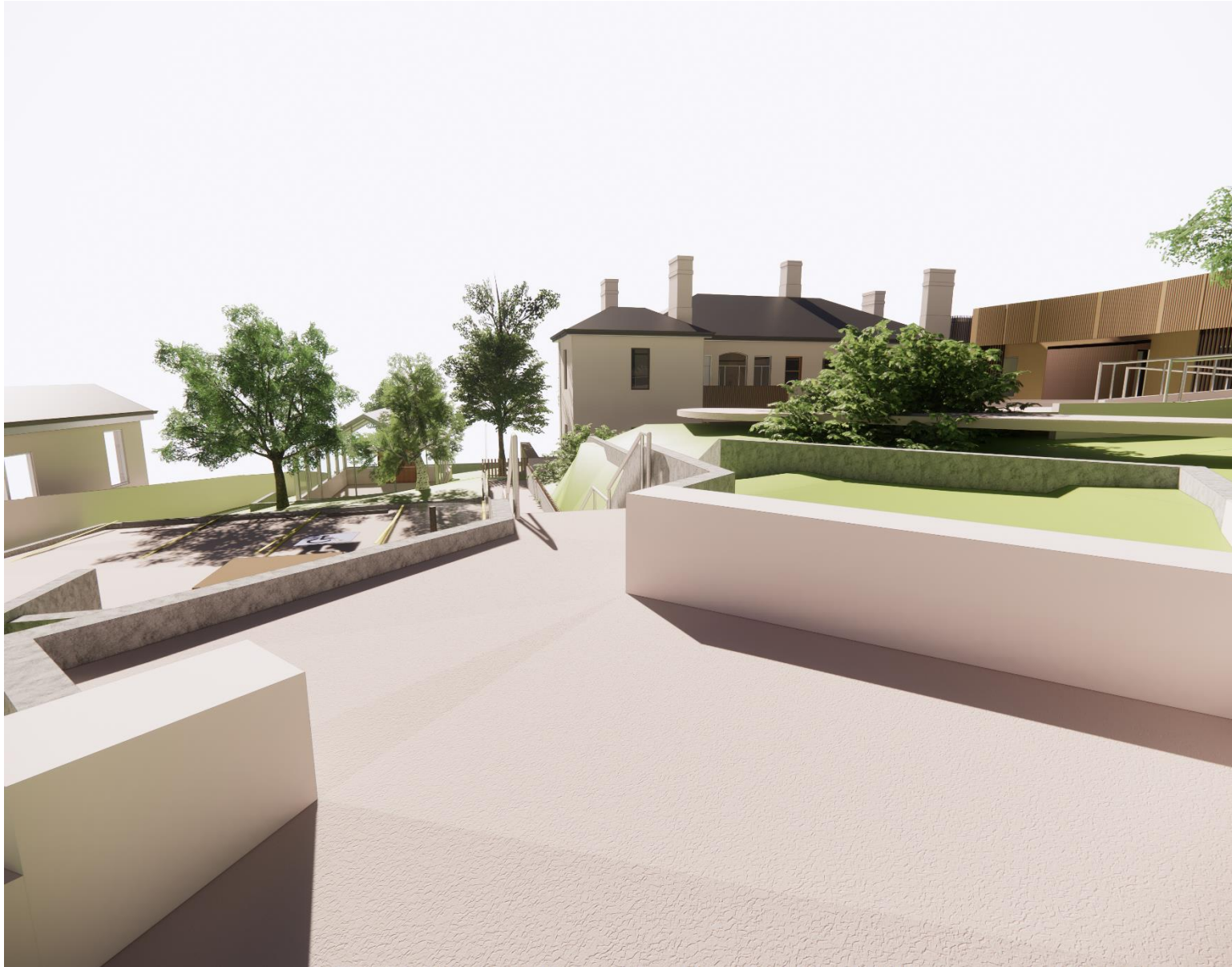
Tasmanian Government Art Site Scheme – Peacock Centre

1. Site plan showing arrival pathway
2. Renders showing views of arrival pathway

Site plan showing arrival pathway



Arrival pathway
From Elphinstone Road
entrance – view I





Arrival pathway
From Elphinstone Road
entrance – view 2



Arrival pathway corner
looking toward building
entrance